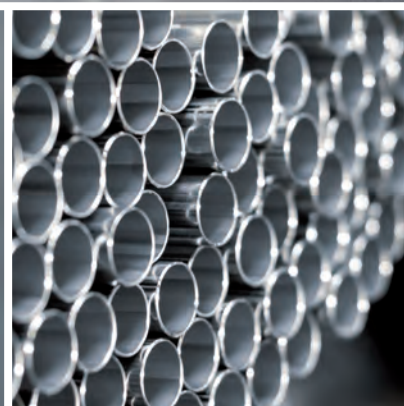
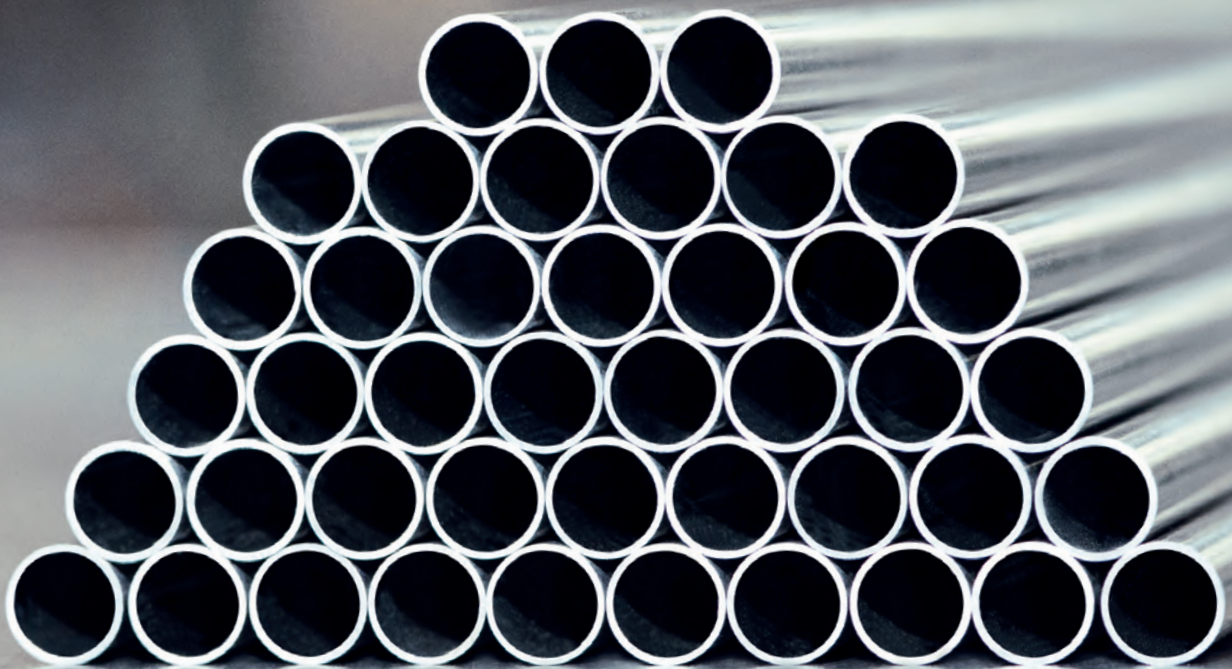




PRECISION IN SEMI-FINISHED METAL PRODUCTS



# THE COMPANY



Managing directors: Lorenz Geyer and Andreas Schwender

## ABOUT US

We have been manufacturing semi-finished metal products for more than 90 years and are already in the 3rd generation. Our focus has always been the needs of our customers. This philosophy has made us an innovative and flexible family company and a competent contact for all kinds of semi-finished metal products in Europe.

Our company ethos is geared towards an on-going improvement of the work flow, combined with investments in machines, logistics/information technology and further training, generated through the exchange of ideas between motivated teams of employees.

As a result, we can ensure that our customer will be altogether satisfied with the quality of our products and services.

## HISTORY

**1926**

Founded by Eugen Geyer senior in Pforzheim

**1945**

Start of production in Königsbach

**1954**

Son, Eugen Geyer, joins the company

**1962**

Construction of the production hall, located in Untere Talstraße

**1995**

Lorenz Geyer becomes managing director

**2001**

New construction of the production facilities in Remchinger Straße

**2011**

Extension of the production hall

**2014**

Second extension of the production hall and expansion of the stainless steel production

**2017**

Starting the production of longitudinally welded stainless steel tubes



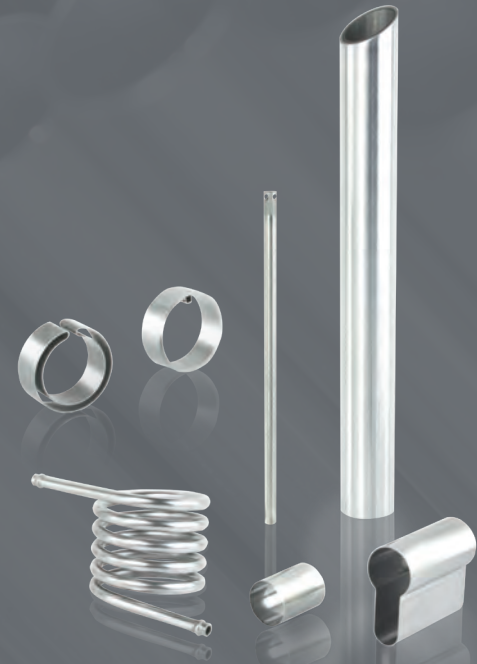
## OUR STRENGTHS

- A wide variety of different metals and alloys
- Small quantities – from one random length upwards
- Varied in-house production depth
- Short delivery times
- Tight tolerances
- Special customisations and further processing



## PRODUCTS

- Tubes and finished tube components
- Profiled tubes
- Compound tubes
- Bars and turned parts
- Component manufacturing



## INDUSTRIES

- Automotive
- Medical technology
- Measurement and sensor technology
- Heat exchangers
- Induction components
- Technical ceramics
- Mechanical and tool manufacturing



# MATERIALS OVERVIEW

	Material designation	Material abbreviation	Outer diameter (mm) up to	finish				
				seamless	extruded	welded	redrawn	annealed
ALUMINIUM	EN AW-1050A	Al99,5	40		■		■	■
	EN AW-3103	AlMn1	40	■			■	■
	EN AW-5049	AlMg2Mn0,8	40	■			■	■
	EN AW-5754	AlMg3	40	■			■	■
	EN AW-6060	AlMgSi	40		■		■	■
COPPER	CW004A	Cu-ETP	40	■			■	■
	CW009A	Cu-OFE	40	■			■	■
	CW021A	Cu-HCP	40	■			■	■
	CW024A	Cu-DHP	40	■			■	■
BRONZE	CW452K	CuSn6	10	■			■	■
	CW453K	CuSn8	20	■			■	■
BRASS	CW502L	CuZn15	20	■			■	■
	CW505L	CuZn30	30	■			■	■
	CW508L	CuZn37	30	■			■	■
NICKEL SILVER	CW403J	CuNi12Zn24	20	■			■	■
	CW409J	CuNi18Zn20	20	■			■	■
NICKEL	2.4061	Ni99,6	20	■		■	■	■
	1.3917	Ni42	20	■		■	■	■
	1.3981	NiCo29/18	20	■		■	■	■
	2.4360	NiCu30Fe	20	■			■	■
	2.4858	NiCr21Mo	20			■	■	■

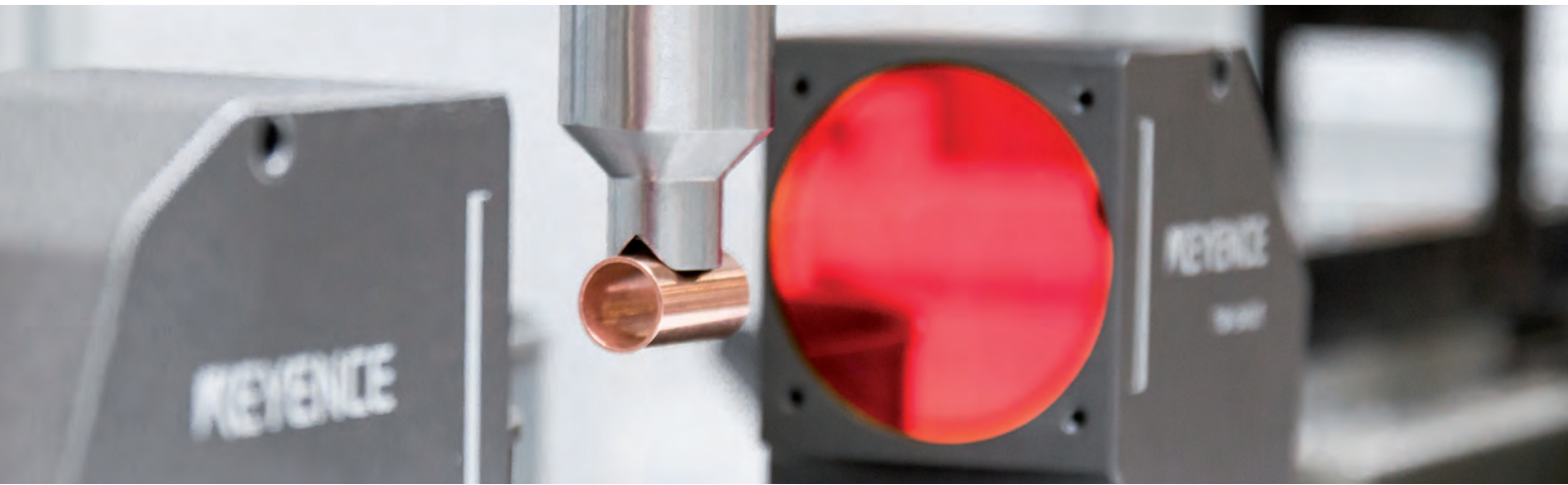
Material designation	Material abbreviation	Outer diameter (mm) up to	finish				
			seamless	welded	redrawn	as drawn	annealed
1.4016	X6Cr17	20		■	■	■	■
1.4301	X5CrNi18-10	20	■	■	■	■	■
1.4306	X2CrNi19-11	20		■	■	■	■
1.4307	X2CrNi18-9	20		■	■	■	■
1.4401	X5CrNiMo 17-12-2	20		■	■	■	■
1.4404	X2CrNiMo 17-12-2	20	■	■	■	■	■
1.4435	X2CrNiMo 18-14-3	20	■	■	■	■	■
1.4509	X2CrTiNb18	20		■	■	■	■
1.4510	X3CrTi17	20		■	■	■	■
1.4521	X2CrMoTi 18-2	20		■	■	■	■
1.4541	X6CrNiTi 18-10	20		■	■	■	■
1.4571	X6CrNiMoTi 17-12-2	20	■	■	■	■	■
1.4828	X15CrNiSi 20-12	20		■	■	■	■
1.4833	X12CrNi 23-13	20		■	■	■	■
1.4841	X15CrNiSi 25-21	20		■	■	■	■
1.4845	X8CrNi25-21	20		■	■	■	■
1.4876	X10NiCrAlTi 32-20	20		■	■	■	■

**ADDITIONAL DIMENSIONS AND MATERIALS ARE POSSIBLE AT ANY TIME.**

WE LOOK FORWARD TO RECEIVING YOUR ENQUIRY!



# QUALITY



QUALITY  
MADE IN GERMANY

## PHILOSOPHY

We produce semi-finished metal products for all kinds of different industries and applications. We perform on customer request precision work, when the tightest tolerances, special mechanical qualities or a special surface is required. In order to meet your demands, we use state-of-the-art systems, skilled workers and a quality management system which is constantly being optimised.



## QM SYSTEM

We are certified to DIN ISO 9001:2015. Accompanying the production, we guarantee a continuous monitoring of the quality standards from the incoming goods to the outgoing goods. By permanently monitoring and improving our quality-related processes, we strive to manufacture and deliver your products at the highest quality level.



## INSPECTIONS

### Surface

- Roughness measurement
- Optical inspection with stereo and digital microscope

### Mechanical qualities

- Tension test
- Ring tension test
- Flattening test
- Expansion test
- Hardness test
- Microstructure analysis
- Grain size inspection

### Geometry

- Robots for testing
- Laser contour measurement
- Digital profile measurement
- Check gauges

### Tube integrity

- Eddy current test

## DOCUMENTATION

- First sample test reports according to VDA
- Inspection reports
- Inspection documents according to DIN EN 10204



# STAINLESS STEEL TUBES

The core competence of our stainless steel division is in producing special dimensions and special tolerances as well as component manufacturing. Our technical manufacturing framework is constantly being expanded enabling us to extend our offer for you with additional dimensions. You can also purchase welded stainless steel tubes from us and thus profit from the large quantities which we produce for you at short notice.

## WELDED

- Sheet material from certified European manufacturers
- Outer diameter: 5.00 – 20.00 mm
- Wall thickness: 0.30 – 1.00 mm
- Lengths: 1 – 6000 mm incl. machining of the ends
- Round or profiled tubes
- Short delivery times
- Small quantities also possible

## REDRAWN

- Redrawn tubes with tight tolerances, high strength and perfect surfaces
- Seamless or welded
- Outer diameter: 0.50 – 30.00 mm
- Wall thickness: 0.10 – 2.50 mm
- Lengths: 1 – 6000 mm incl. machining of the ends
- Round or profiled tubes
- Short delivery times



# COMPOUND TUBES

Compound tubes or multi-channel tubes are an excellent choice for allowing the flow of all kinds of different substances such as liquid coolants or gases. They are, for example, used in heating systems and welding technology.

We develop special manufacturing processes to produce compound tubes with different materials. From the design sample to the final product we find a proper solution together with you, fully customised to your needs.



# PROFILED TUBES

Profiled tubes are manufactured from drawn or extruded round tubes. Through our knowledge due to many years of experience and our special manufacturing processes, we have a wide portfolio of technical possibilities and are thus able to manufacture profiled tubes in all kinds of different shapes.

Thanks to its high degree of dimensional accuracy and good surface quality, the production of drawn profiled tubes is now considered to be one of the most effective and economical manufacturing processes. It is a cost-effective alternative to metal-cutting production.

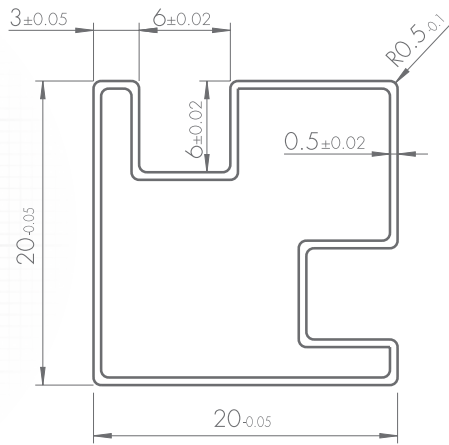
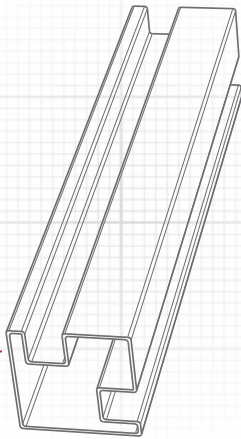
Whether round or square, 6- or 8-sided, oval or conical – we produce profiled tubes in line with your requirements. Our engineers are ready for a challenge and will design a suitable profile with you.





# INDIVIDUAL SOLUTIONS

**1** Sketch



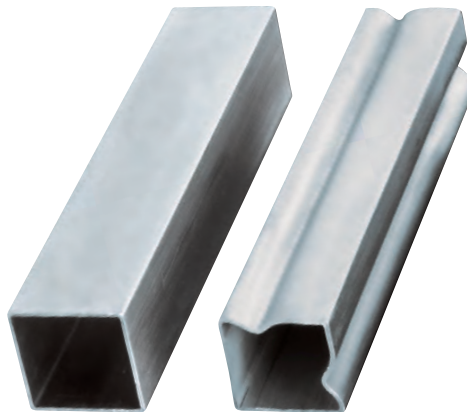
**2** CAD-drawing



**3** Pre-material selection



**4** Drawing sequences



**5** Finished product



**1** Sketch

The development of your new product could be as follows:

You provide us with your idea as a sketch.

**2** CAD-drawing

Based on the sketch, our engineers create a 3D model with an approval drawing including the desired dimensions of the sample.

**3** Pre-material selection

With the drawing as a basis, the suitable pre-material can be optimised.

**4** Drawing sequences

In a series of tests, the necessary drawing steps are determined.

**5** Finished product

We accompany you from the initial idea to the completed product solution.



# FROM THE TUBE TO THE FINAL PRODUCT

If you need a special surface finish or machining of the ends, a curved or turned tube, we are your perfect partner. Through our knowledge of more than 90 years of experience in manufacturing and processing semi-finished products, we can offer you a diverse array of additional processing options.

Use this to your advantage and contact us. We will be pleased to provide you with our comprehensive technical framework and our many years of expertise to implement your products and meet your individual requirements.



## PROCESSING OPTIONS

- Turning
- Bending
- Laser processing
- Machining of the ends
- Surface treatment
- and much more ...

# WHERE TO FIND US

## QUALITY

MADE IN GERMANY



Eugen Geyer GmbH | Remchinger Straße 9 | 75203 Königsbach-Stein | Germany

Tel: +49 (0) 7232 30 47-0 | Fax: +49 (0) 7232 30 47-47

[vertrieb@eugengeyer.de](mailto:vertrieb@eugengeyer.de) | [www.eugengeyer.de](http://www.eugengeyer.de)